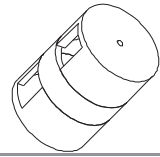
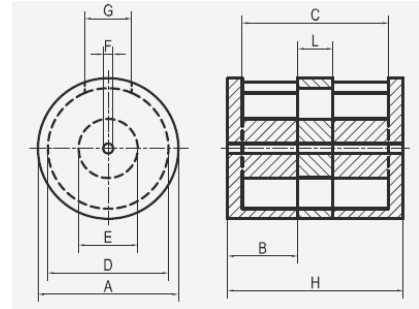
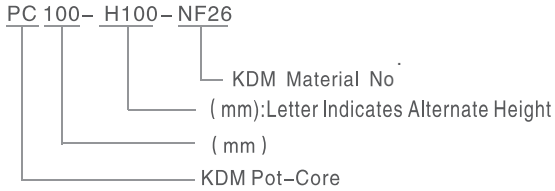


# Magnetic Powder Cores

## 100mm Pot Cores



### 1. Typical Part Number



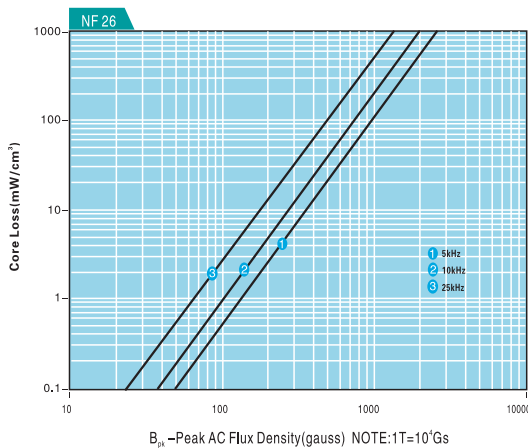
### 2. Physical Characteristics

Part No.	Unit	AL(nH/N <sup>2</sup> )	A(mm)	B(mm)	C(mm)	D(mm)	E(mm)	F(mm)	G(mm)	H(mm)	L(mm)	ℓ <sub>e</sub> (cm)	A <sub>e</sub> (cm <sup>2</sup> )	V (cm <sup>3</sup> )	W (cm <sup>2</sup> )
		± 15%	Max	± 0.50	Min	Min	Max	Min	Min	Max	± 0.2				
PC100-H100-NF26		227	103.2	50.25	79.00	86.00	40.50	8.20	34.00	101.0	/	22.70	14.73	334.20	18.40

### 3. Electrical Parameters(Typical) Temperature(25°C ± 2°C)

Test Item	Test Condition	Value(Typical)
Inductance	φ 1.2mm/59Ts, 10kHz/1V, I <sub>DC</sub> =0A	790.2 μH ± 15%
DC-Bias	φ 1.2mm/59Ts, 10kHz/1V, I <sub>DC</sub> =61.3A(H <sub>DC</sub> =200Oe)	576.1 μH (Min.)
Remarks	Inductance value specified with two pot cores PC100 × 50-NF26.	

Core Loss Curves(Typical)



DC-Bias Curves(Typical)

